



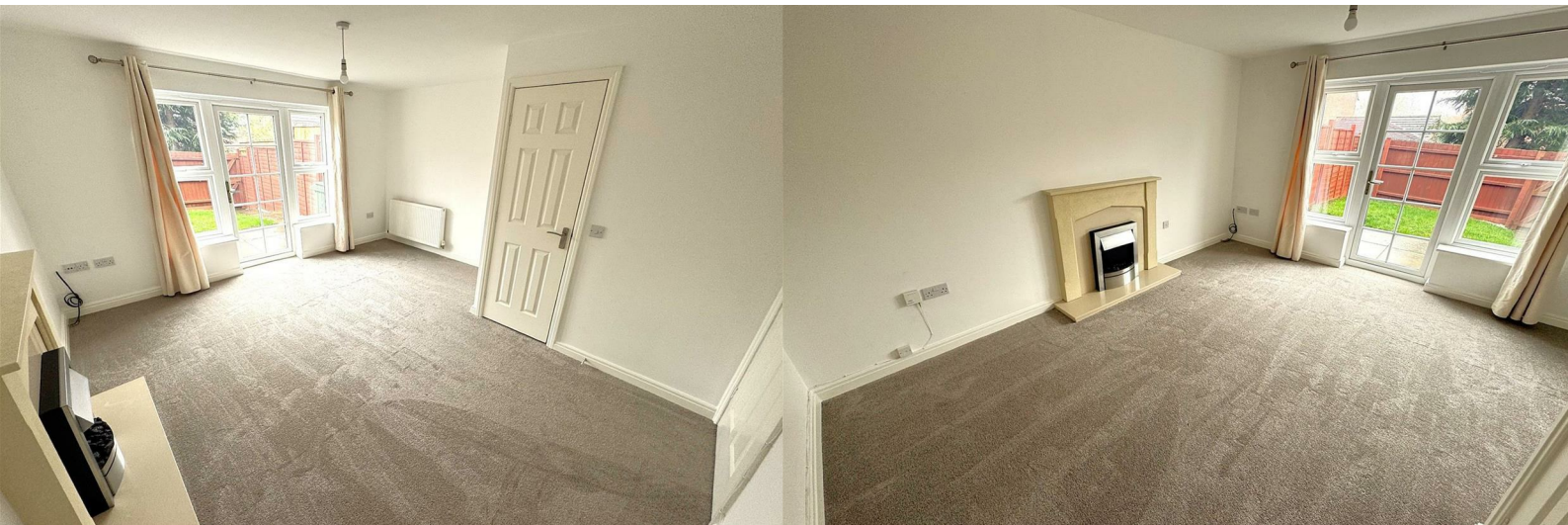
**STUART  
CHARLES**  
ESTATE AGENTS



## Flatford Close

, Corby, NN18 8PU

£975 Per month



# Flatford Close

, Corby, NN18 8PU

£975 Per month



## Entrance Hall

Entered via a double glazed door, radiator, stairs rising to first floor landing, doors to:

## Guest W.C

Fitted to comprise a two piece suite consisting of a low level pedestal, low level wash hand basin, radiator, double glazed window to front elevation.

## Kitchen

9'10" x 6'2" (3.0 x 1.9)

Fitted to comprise a range of base and eye level units with a single steel sink and drainer, gas hob with extractor, electric oven, space for automatic washing machine, space for free standing fridge/freezer, double glazed window to front elevation.

## Lounge/Diner

13'9" x 11'9" (4.2 x 3.6)

Double glazed window and door to rear elevation, radiator, Tv point, telephone point, under stairs storage.

## First Floor Landing

Stairs rising to first floor landing, storage cupboard, doors to:

## Bedroom One

13'9" x 11'5" (4.2 x 3.5)

Two double glazed window to rear elevation, radiator.

## Bedroom Two

11'9" x 6'6" (3.6 x 2.0)

Double glazed window to front elevation, radiator.

## Bathroom

Fitted to comprise a three piece suite consisting of a panel bath with mains feed shower over, low level pedestal, low level wash hand basin, radiator, double glazed window to front elevation.

## Outside

Front: A low maintenance gravel garden features several low maintenance planting area's.

Rear: A patio area leads onto a laid lawn and leads to gated rear access which leads to the allocated parking space.



### Road Map



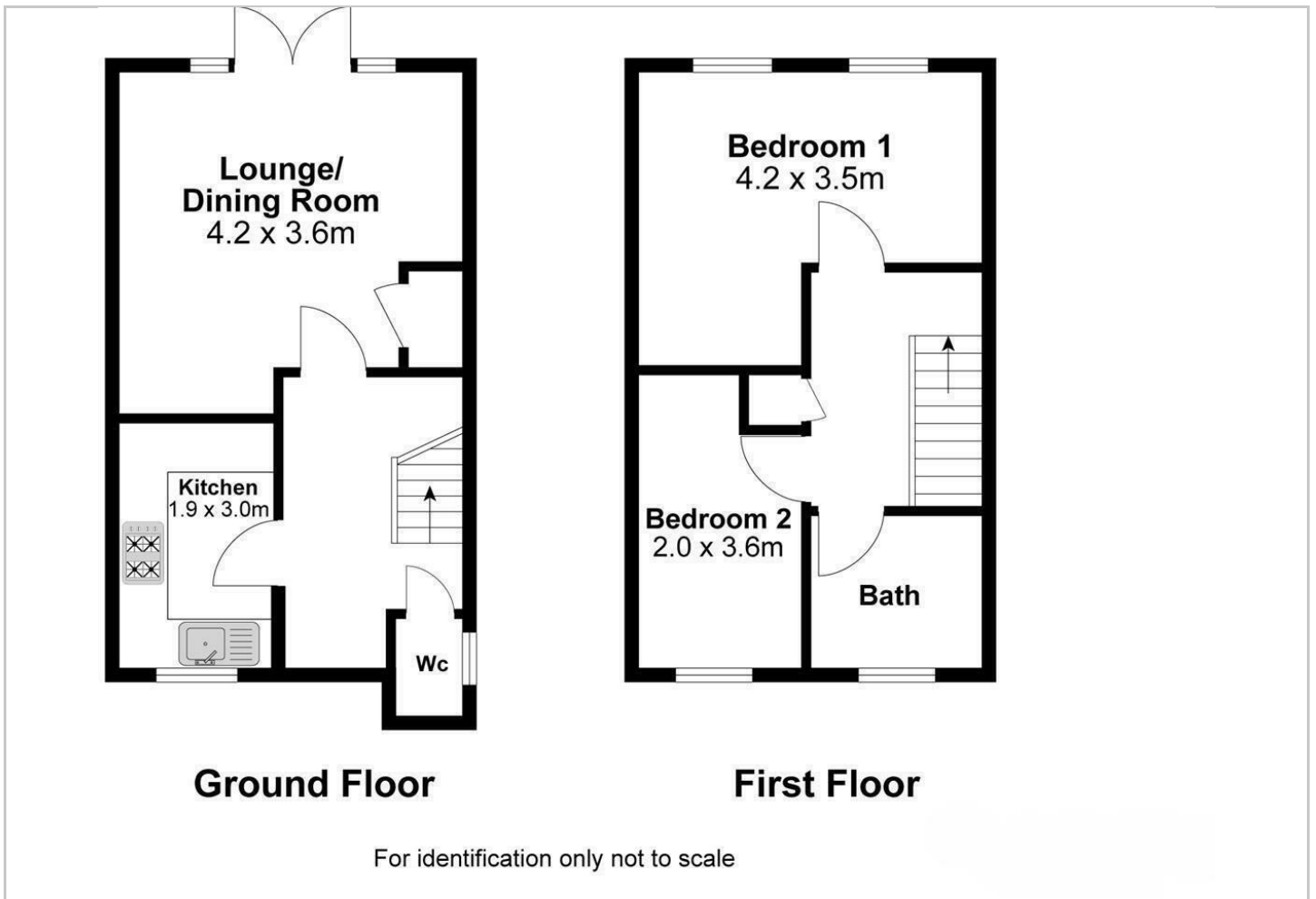
### Hybrid Map



### Terrain Map



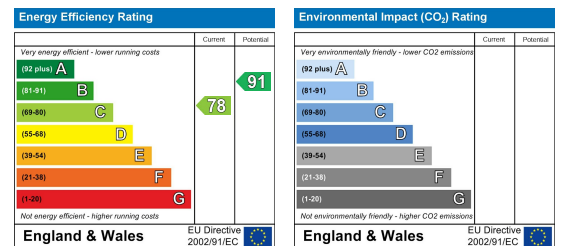
### Floor Plan



### Viewing

Please contact our Stuart Charles Estate Agents Office on 01536 234264 if you wish to arrange a viewing appointment for this property or require further information.

### Energy Efficiency Graph



These particulars, whilst believed to be accurate are set out as a general outline only for guidance and do not constitute any part of an offer or contract. Intending purchasers should not rely on them as statements of representation of fact, but must satisfy themselves by inspection or otherwise as to their accuracy. No person in this firm's employment has the authority to make or give any representation or warranty in respect of the property.